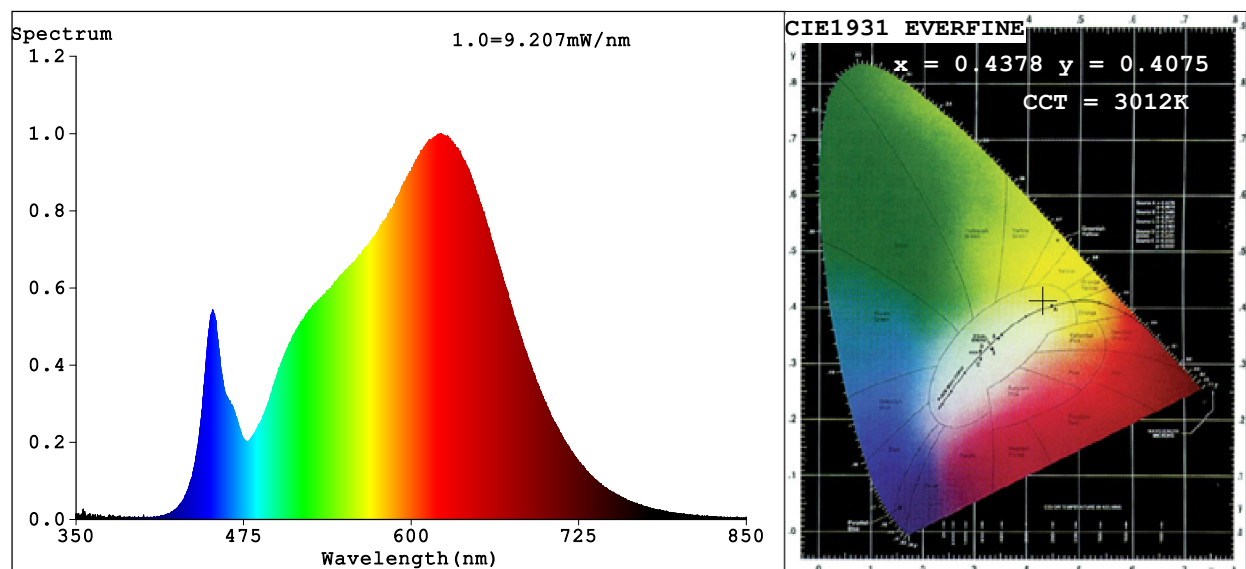


Spectrum Test Report



Color Parameters:

Chromaticity Coordinate: $x=0.4378$ $y=0.4075$ $u'=0.2497$ $v'=0.5228$
CCT=3012K (Duv=0.0012) Dominant WL:Ld =582.3nm Purity=53.7%
Ratio:R=24.3% G=73.0% B=2.8%; Peak WL:Lp=621.7nm FWHM=163.0nm
Render Index:Ra=93.5 CRI=90.6 TM30:Rf=92 Rg=99
R1 =94 R2 =96 R3 =97 R4 =94 R5 =93 R6 =95 R7 =94
R8 =84 R9 =63 R10=90 R11=96 R12=79 R13=95 R14=98 R15=90

Photo Parameters:

Flux = 456.3 lm Eff. : 55.78 lm/W Fe = 1.569 W

Electrical parameters:

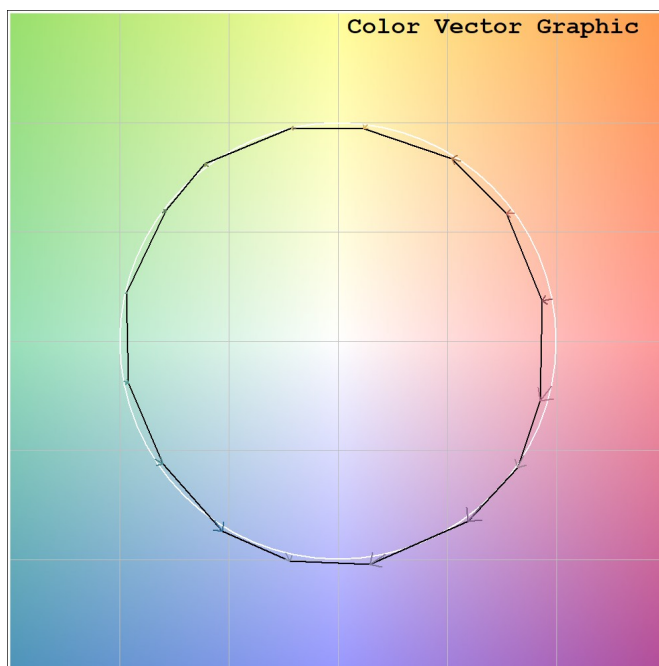
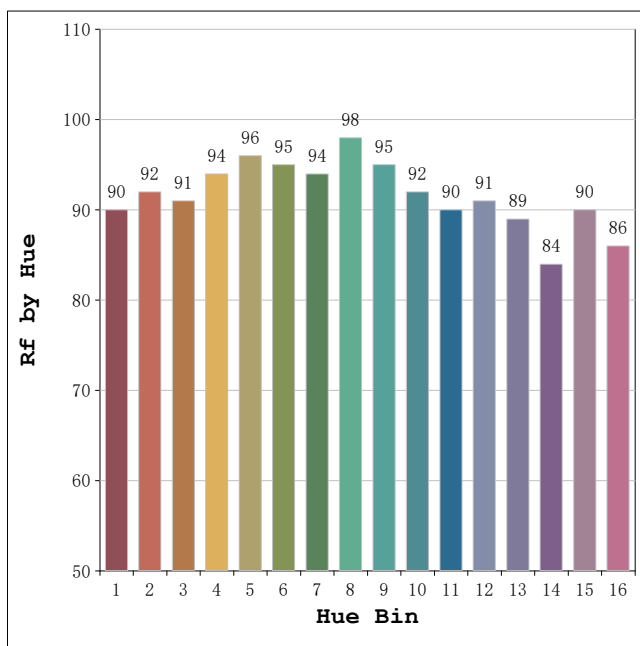
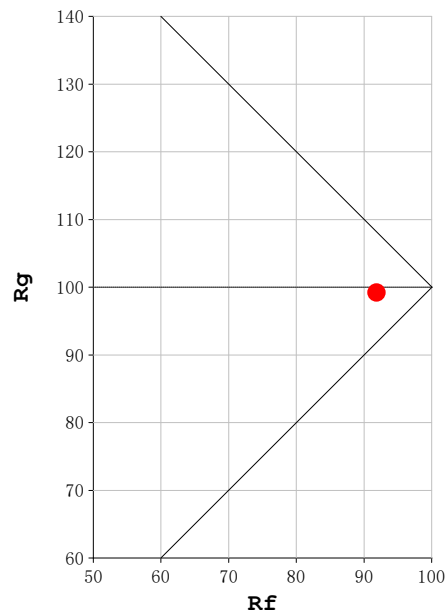
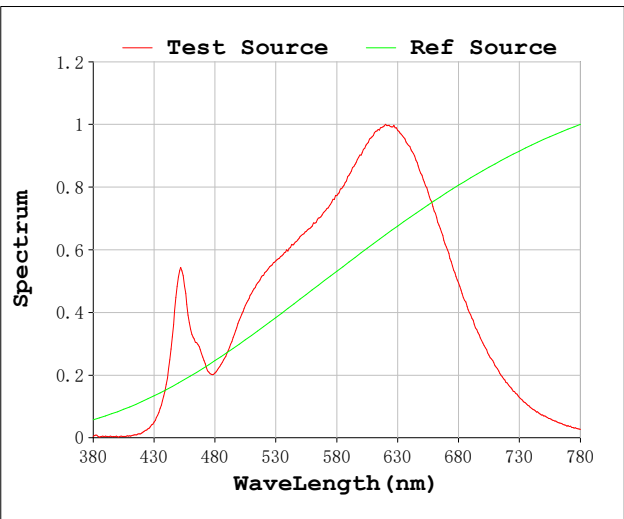
V = 230.09 V I = 0.03784 A P = 8.180 W PF = 0.9395

Status: Integral T = 2000 ms Ip = 32095 (49%)

Model:Focalis Axis 8 W
Tester:Sergio Carneros
Temperature:20Deg
Manufacturer:Luz Negra

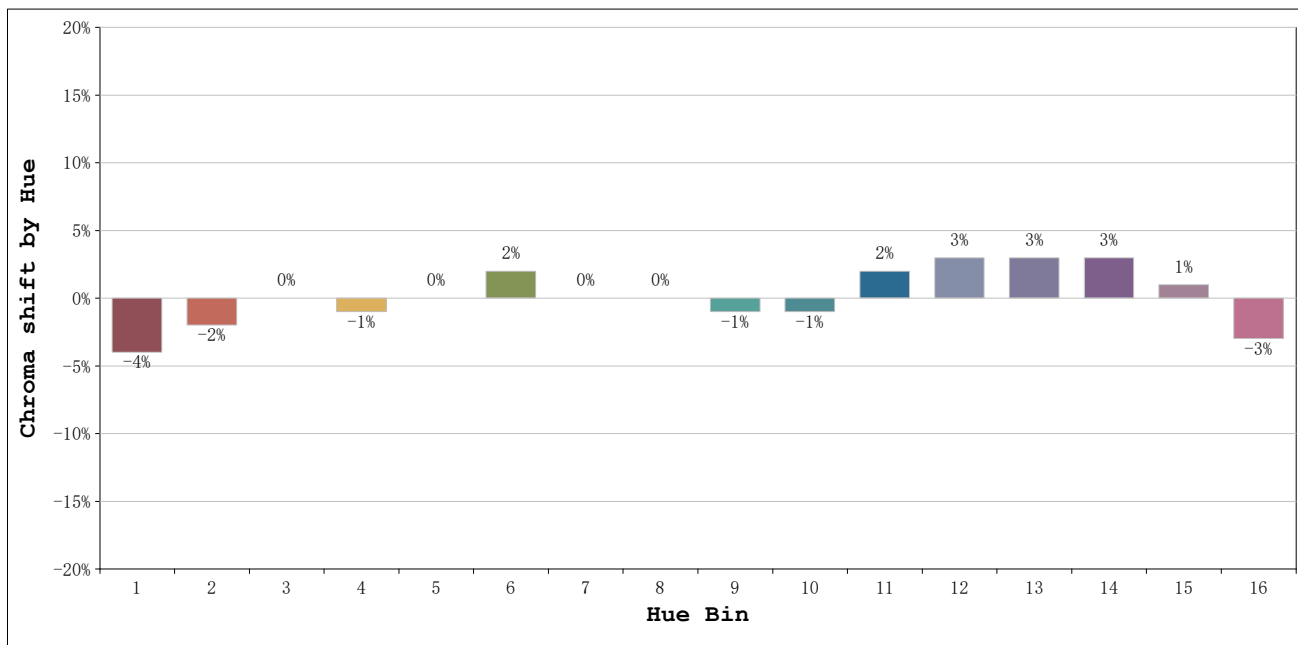
Number:3000K 45°
Date:2026-03-20 12:41:51
Humidity:50%
Remarks:1 unidad ref.blanco

Rf: 92 **CCT: 3012 K** **u': 0.2497**
Rg: 99 **Duv: 0.0012** **v': 0.5228**



Model:Focalis Axis 8 W
 Tester:Sergio Carneros
 Temperature:20Deg
 Manufacturer:Luz Negra

Number:3000K 45°
 Date:2026-03-20 12:41:51
 Humidity:50%
 Remarks:1 unidad ref.blanco



| | | | Graphic shift(%) | |
|---------|-----------------|----|------------------|-----|
| Hue Bin | Hue Angle | Rf | Chroma | Hue |
| 1 | 0.0° - 22.5° | 90 | -4 | 0 |
| 2 | 22.5° - 45.0° | 92 | -2 | 2 |
| 3 | 45.0° - 67.5° | 91 | 0 | 4 |
| 4 | 67.5° - 90.0° | 94 | -1 | 1 |
| 5 | 90.0° - 112.5° | 96 | 0 | 2 |
| 6 | 112.5° - 135.0° | 95 | 2 | 1 |
| 7 | 135.0° - 157.5° | 94 | 0 | -1 |
| 8 | 157.5° - 180.0° | 98 | 0 | 0 |
| 9 | 180.0° - 202.5° | 95 | -1 | 1 |
| 10 | 202.5° - 225.0° | 92 | -1 | 4 |
| 11 | 225.0° - 247.5° | 90 | 2 | 6 |
| 12 | 247.5° - 270.0° | 91 | 3 | 2 |
| 13 | 270.0° - 292.5° | 89 | 3 | -7 |
| 14 | 292.5° - 315.0° | 84 | 3 | -8 |
| 15 | 315.0° - 337.5° | 90 | 1 | -5 |
| 16 | 337.5° - 360.0° | 86 | -3 | -7 |

Model:Focalis Axis 8 W
 Tester:Sergio Carneros
 Temperature:20Deg
 Manufacturer:Luz Negra

Number:3000K 45°
 Date:2026-03-20 12:41:51
 Humidity:50%
 Remarks:1 unidad ref.blanco